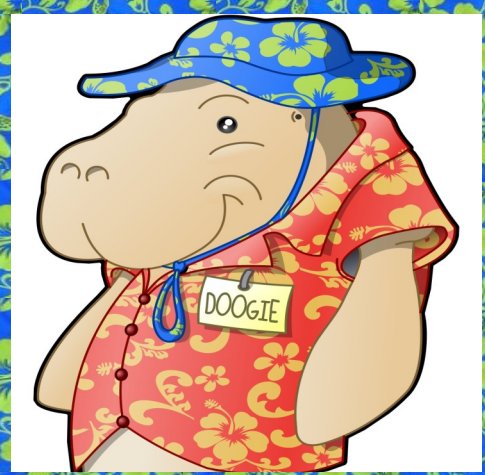


Bay Island
Early Learning & Care
PH 34094433



172 High Central Road, Macleay Island

www.biearlylearning.com.au admin@biearlylearning.com.au

'MEETING' WORLD LEADING STANDARD IN EARLY CHILDHOOD EDUCATION AND CARE

CONGRATULATIONS to every child, educator, family and community member who participated and supported our SMBI early learning centre's (ELC) quality assessment and rating award!

Whilst we would like to be announcing recognition of our islands ELC educators for their essential and exceeding support to the SMBI early years community, we are PROUD to announce state industry regulator recognition for our island service 'meeting' all 7 National Quality Early Childhood Education and Care Standards including the demonstration of every one of the 40 elements and 'exceeding' on numerous.

In the kind words of a respected industry consultant that has worked closely with us "The NQF is considered to be a very high (in fact world leading) standard in early childhood and as such a 'meeting' rating is actually very impressive and a testament to the quality of care provided at the service. Not to mention providing that level of care in a very challenging environment and for children who are getting huge benefit from attending the service. Since 2018 there has been a decline in the proportion of services achieving an exceeding rating. I know that this is cold comfort for educators who put in so much hard work in providing the absolute best service that you can for your community but I would say that no rating can ever really quantify that work and the positive impact that you have everyday for the children who attend the service and families who rely on it."



WELL DONE SMBI! OUR ISLAND FAMILIES DESERVE WORLD LEADING !



Would you like to be involved in our continuous quality improvement processes join our Parent Activity Group on the 1st of July at 9:30am at Curlew Cove



At Bay Island Early Learning & Care, the relationships built between children and educators are warm, caring and responsive to individual needs, enabling meaningful interactions and creating the optimal environment for positive co-learning experiences. Our educators work with families to build connections, creating a sense of security for every child, first with one primary educator and then securing relationships with others, providing a growing circle of security, enhancing family well-being and creating a strong sense of early years community belonging.